

Akron Pond Revitalization

Design Progress Presentation
August 11th, 2020



Community Survey Results

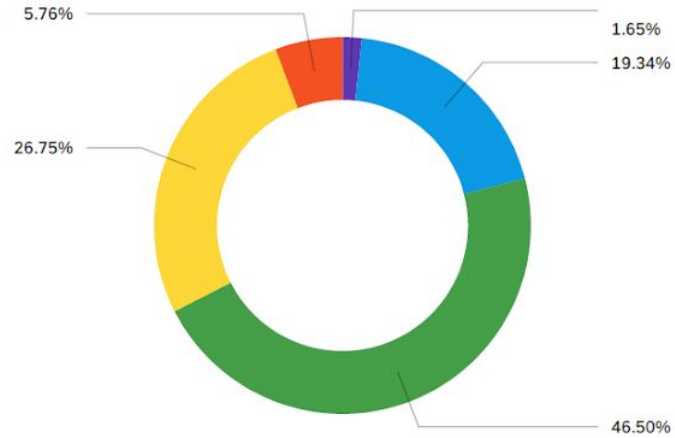


Colorado Center
for Community Development
COLLEGE OF ARCHITECTURE AND PLANNING
UNIVERSITY OF COLORADO **DENVER**



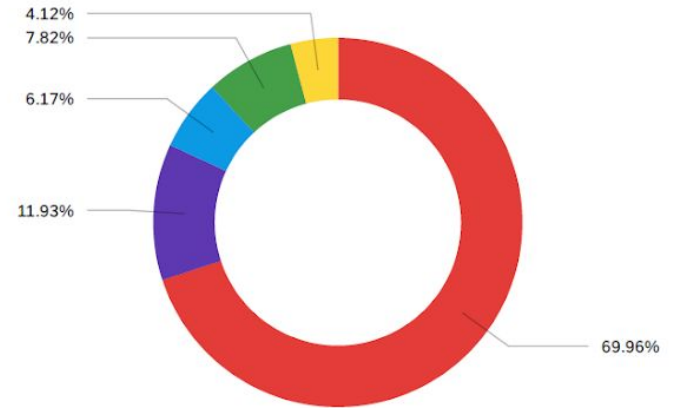
COLORADO
Department of Local Affairs
Division of Local Government

Age



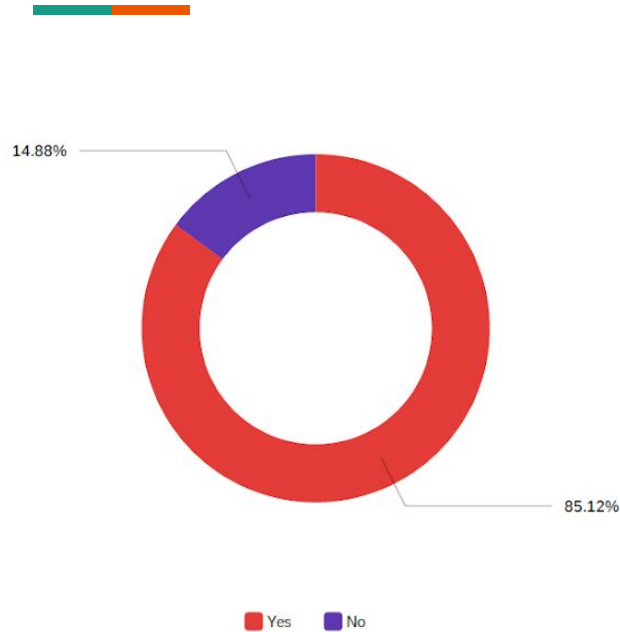
0-11 12-17 18-29 30-44 45-64 65+

Employment Status

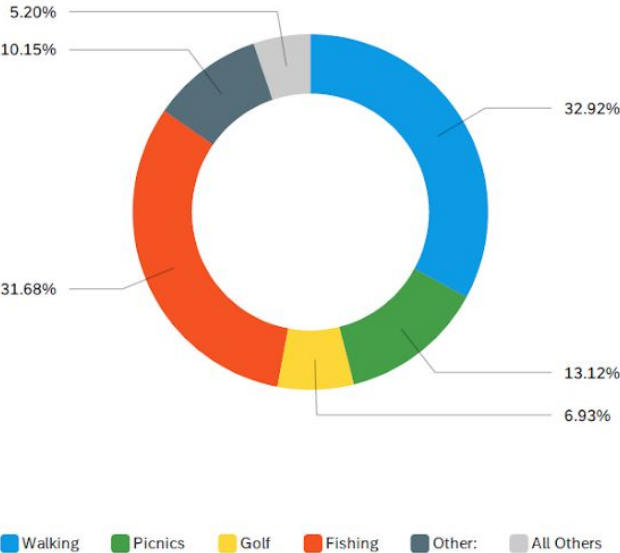


Full time Part time Unemployed Retired Student

Have you visited the pond within the last 3 years?

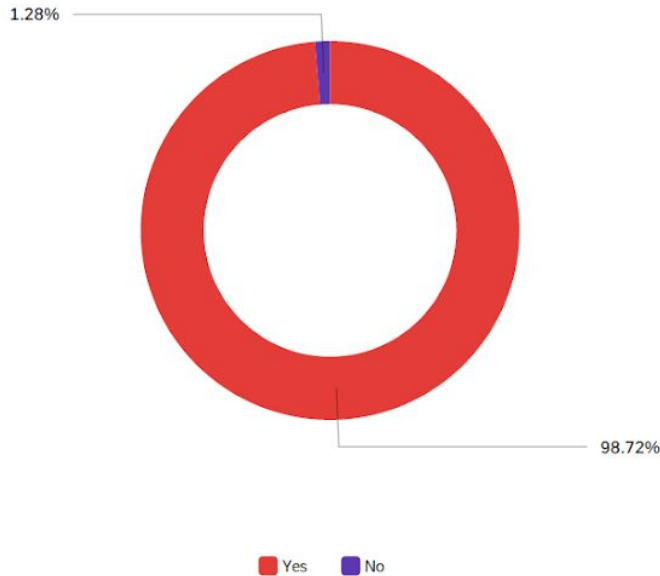


If yes, what activities did you do?



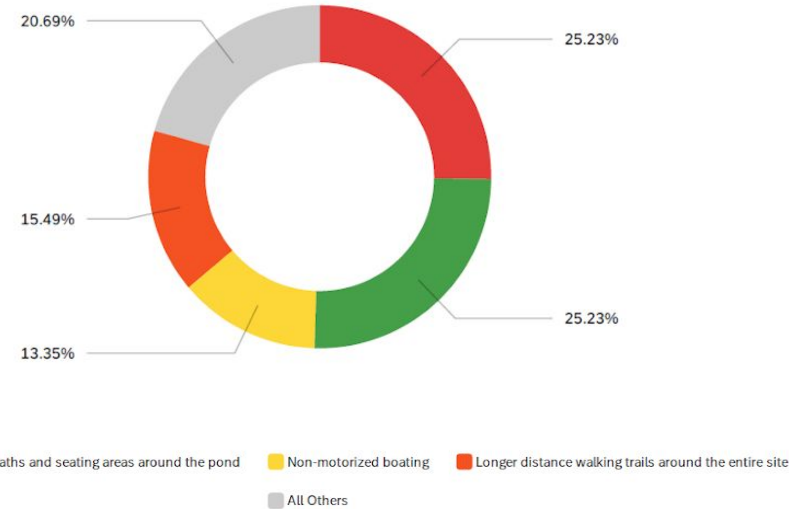
**Write-ins: Scout activities, weddings, taking wedding photos*

Would you like to see improvements to the new pond area?



If yes, what kinds of improvements would you like to see?

NATURE

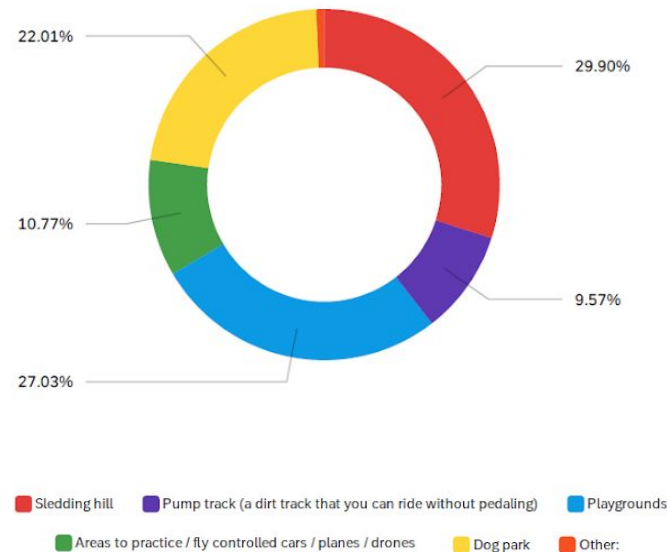


**Write-ins: More trees, wild flowers, public art*

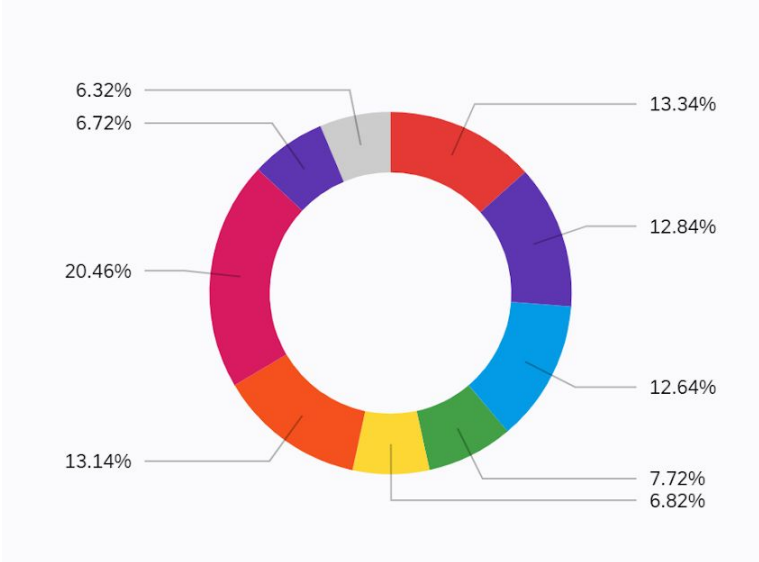
If yes, what kinds of improvements would you like to see?



PLAY



FUNCTIONAL

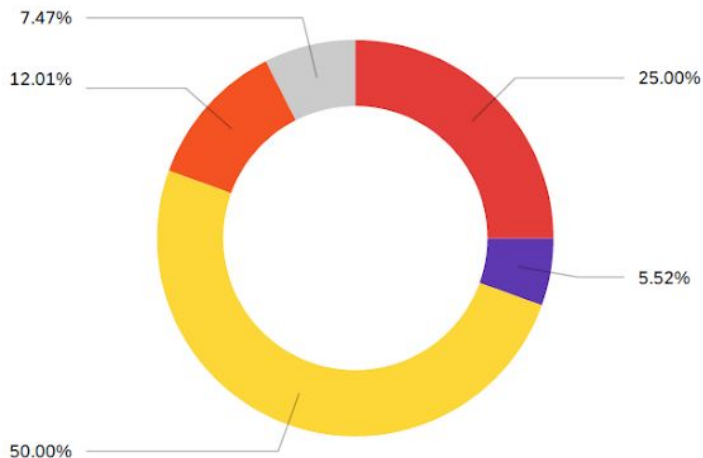


- Camping
- Picnic pavilions for rent
- Grills
- Amphitheater area for events or small performances
- Area for festivals, markets, events and large gatherings
- Fire pit
- Restrooms
- Water / dumping stations
- All Others

What sports activities would you like to see?



SPORTS

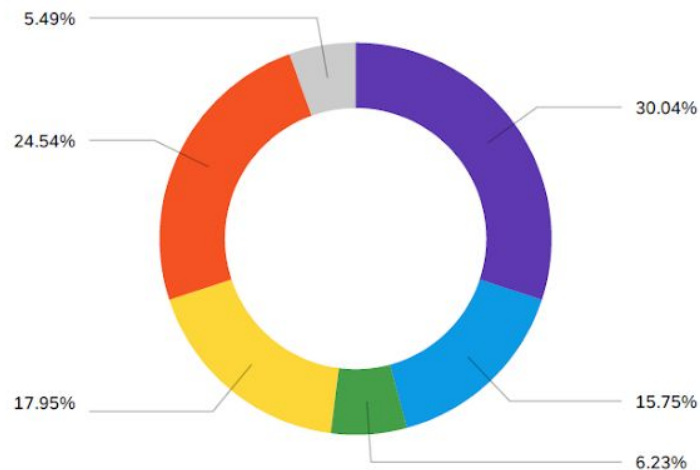


Frisbee golf Baseball fields Yard games (like horseshoe, corn hole, etc.)

None All Others

**Write-ins: Archery course*

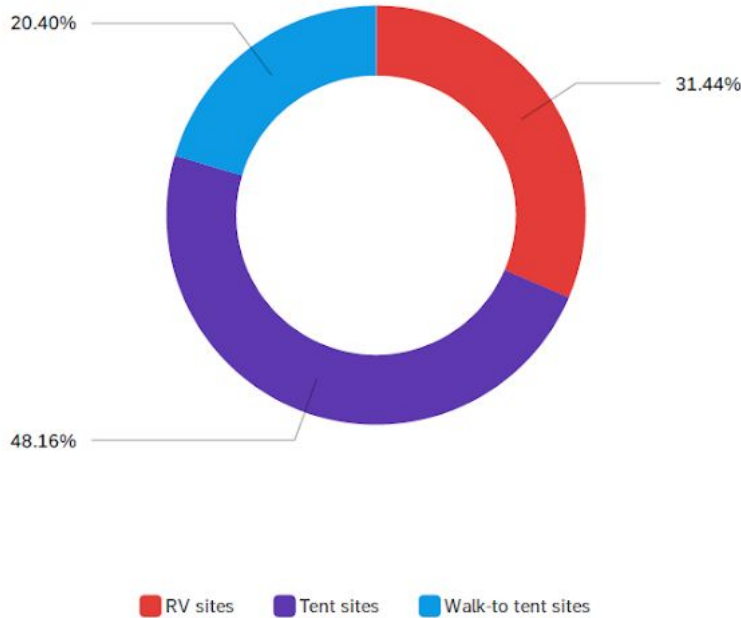
SPORTS COURTS



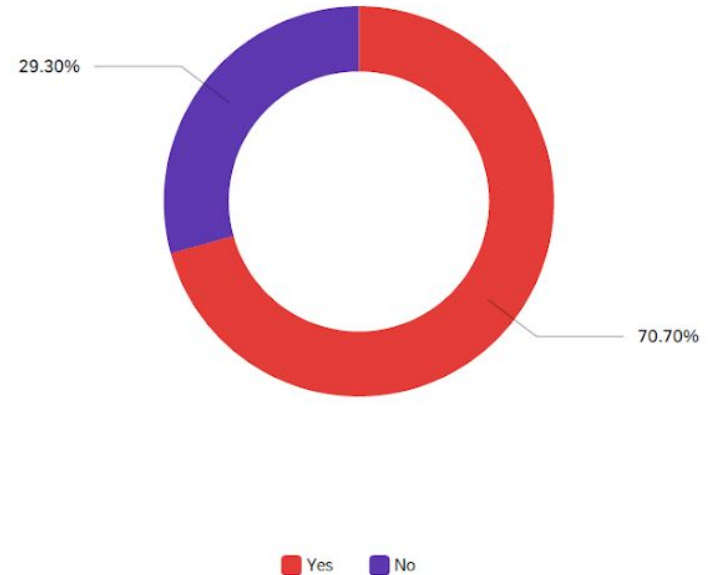
Sand volleyball Basketball Tennis Games (like four square, tetherball, ping pong, chess, etc.)

None All Others

If camping is an improvement you'd like to see, what type would you prefer?



The town is considering a Memorial Bench program, where the town would offer the opportunity to purchase benches in honor of a loved one. Is this something you would be interested in?



Final write-ins

Q10 - In the past, the pond has been called 'Akron Pond'. If you have a suggested name for the revitalized recreation area, please leave it here:

In the past, the pond has been called 'Akron Pond'. If you have a suggested name...

Keep the name!

Prairie pond

Akron Recreation South

Prairie nature park or preserve

Akron's Outdoor Oasis

Akron Open Space

The AKRON THUNDERDOME

Nope...like the Akron pond

Memorial Park at Akron Pond.

For the love ones we lost

Akron Pond Open Space

Akron Recreation Area

The Akron Pond

Akron Pond

Washington County Waterway

Leave it the same.

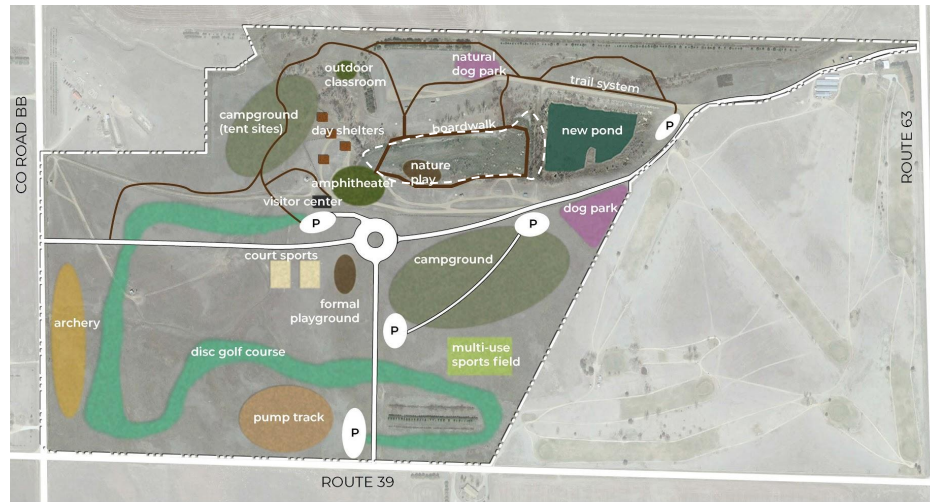
Q18-Would you be interested in getting involved in revitalization efforts at the pond? If so, please leave your name and email address here:

Great news! Several have volunteered.

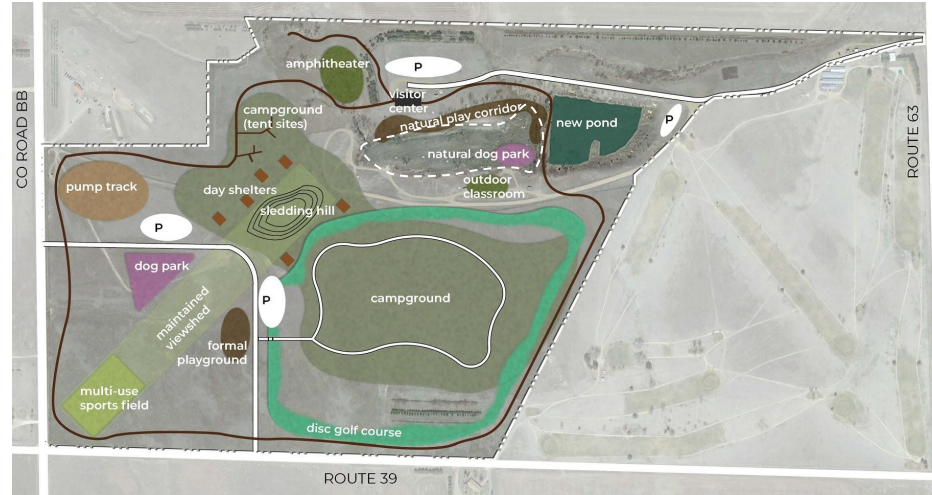
Design Progress



Final Design Concepts

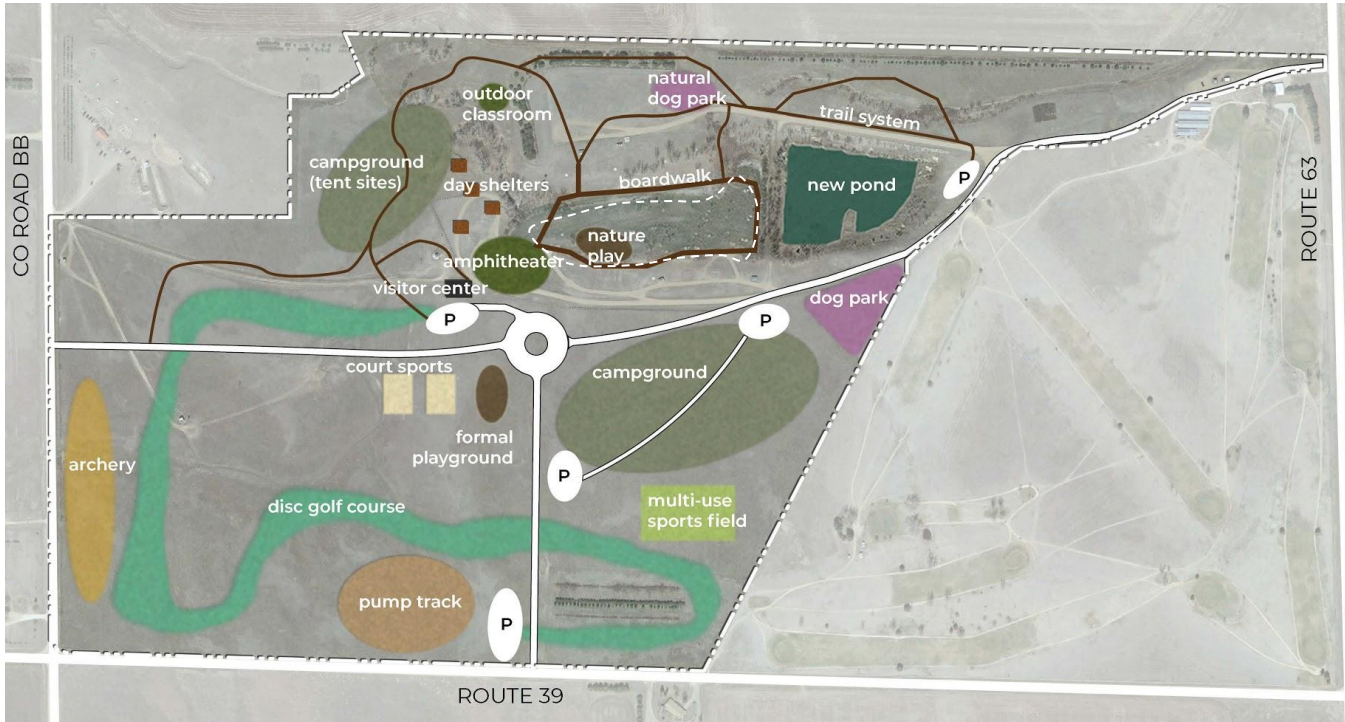


THE T



THE TWO-WAY

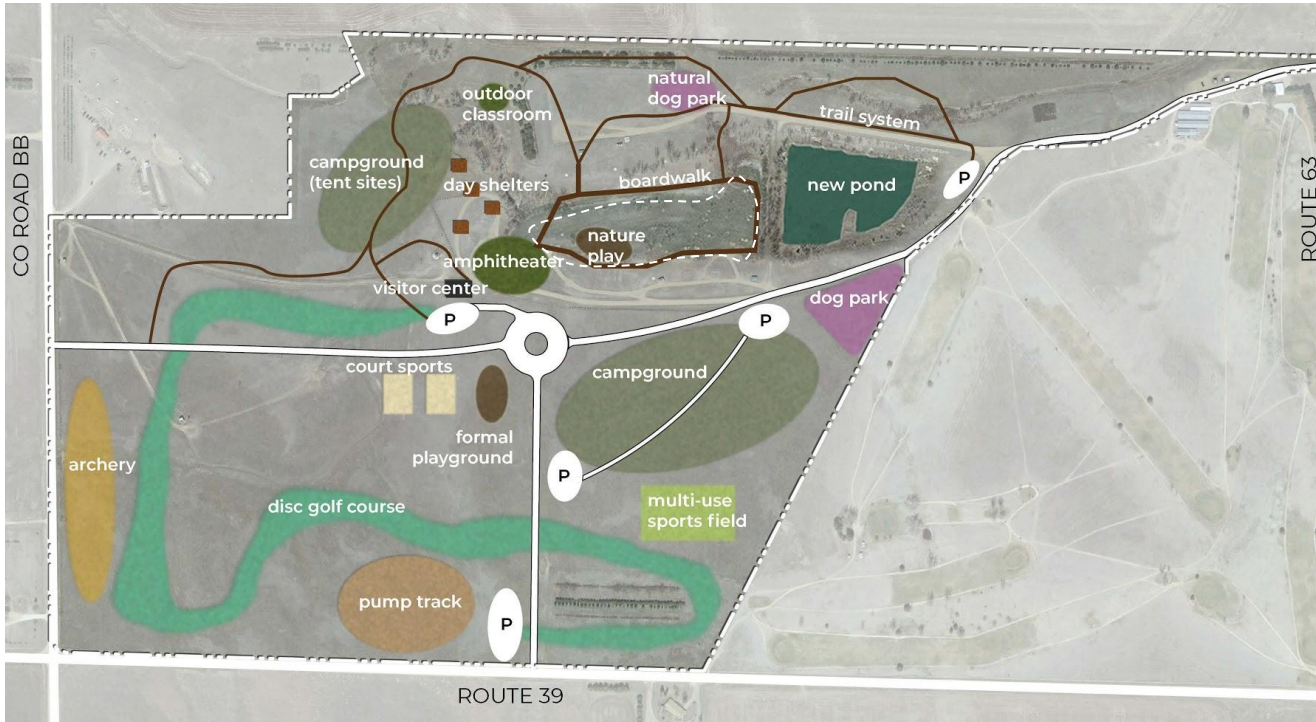
The T- overview



KEY FEATURES:

- Roundabout
- Trail system north of pond
- Centrally located visitor center
- Amphitheater situated along old pond

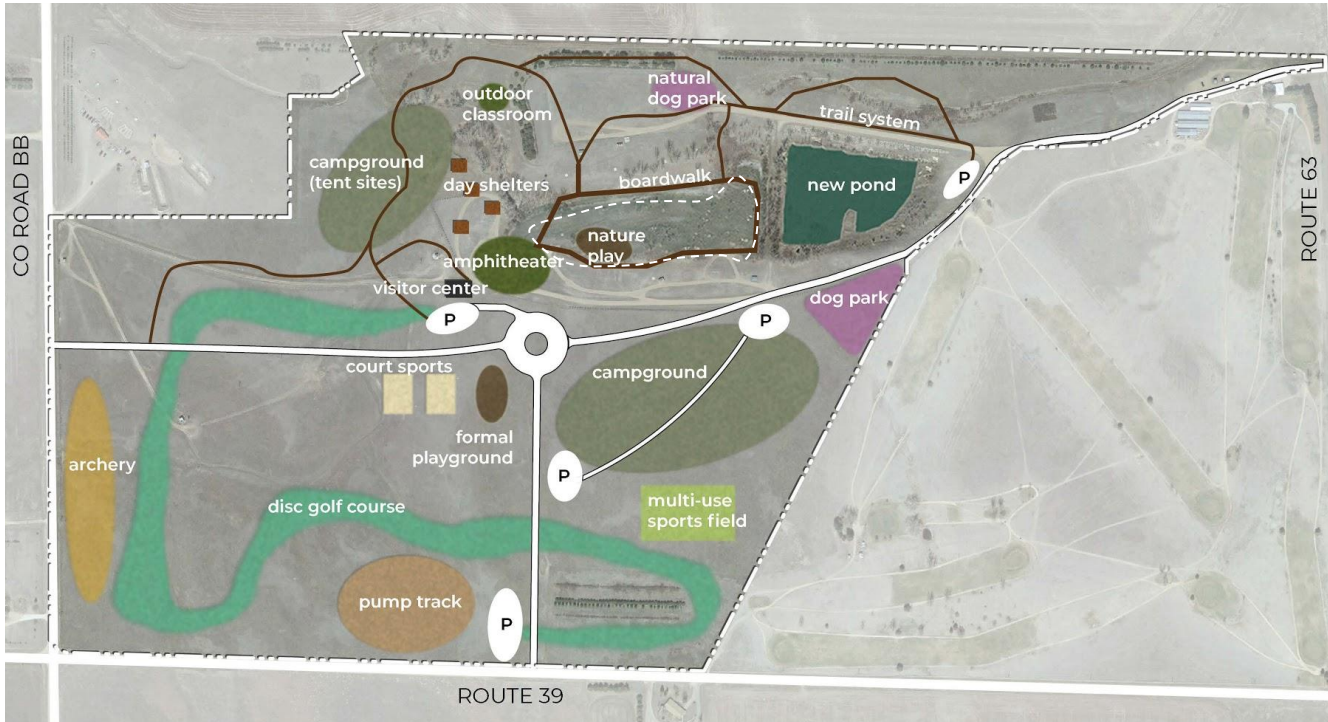
The T- precedents



ROUNDBOUT



The T- precedents

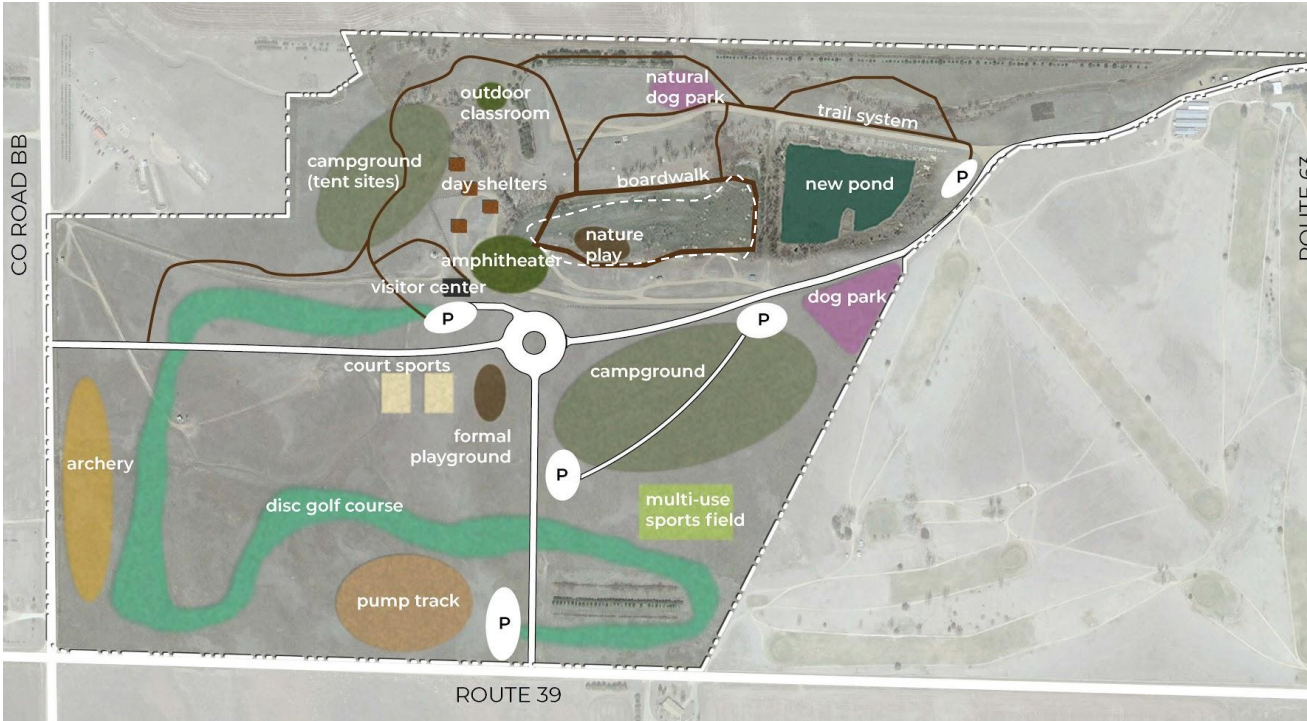


VISITOR CENTER



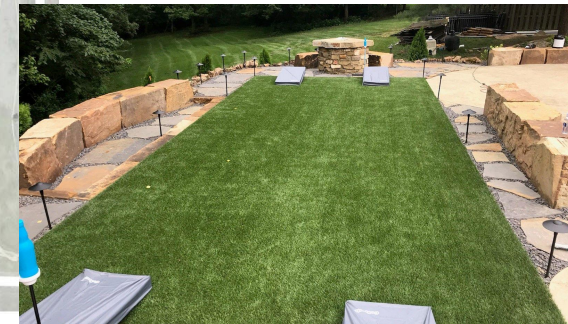
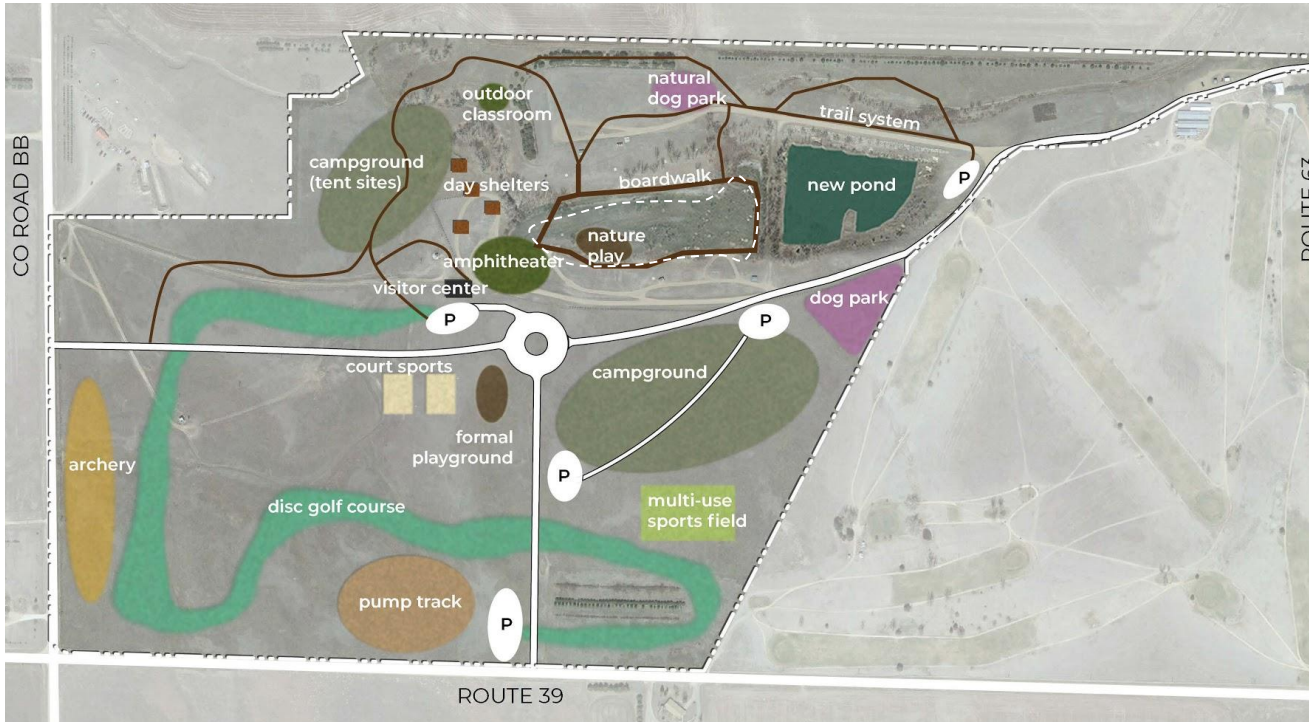
The T- precedents

AMPHITHEATER



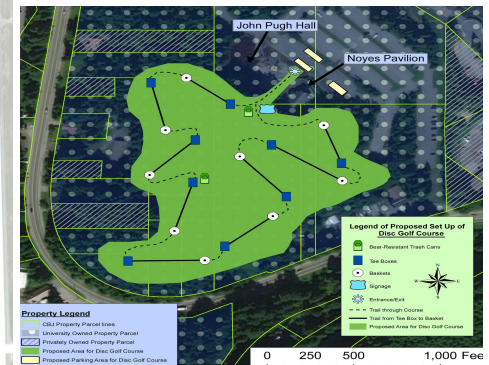
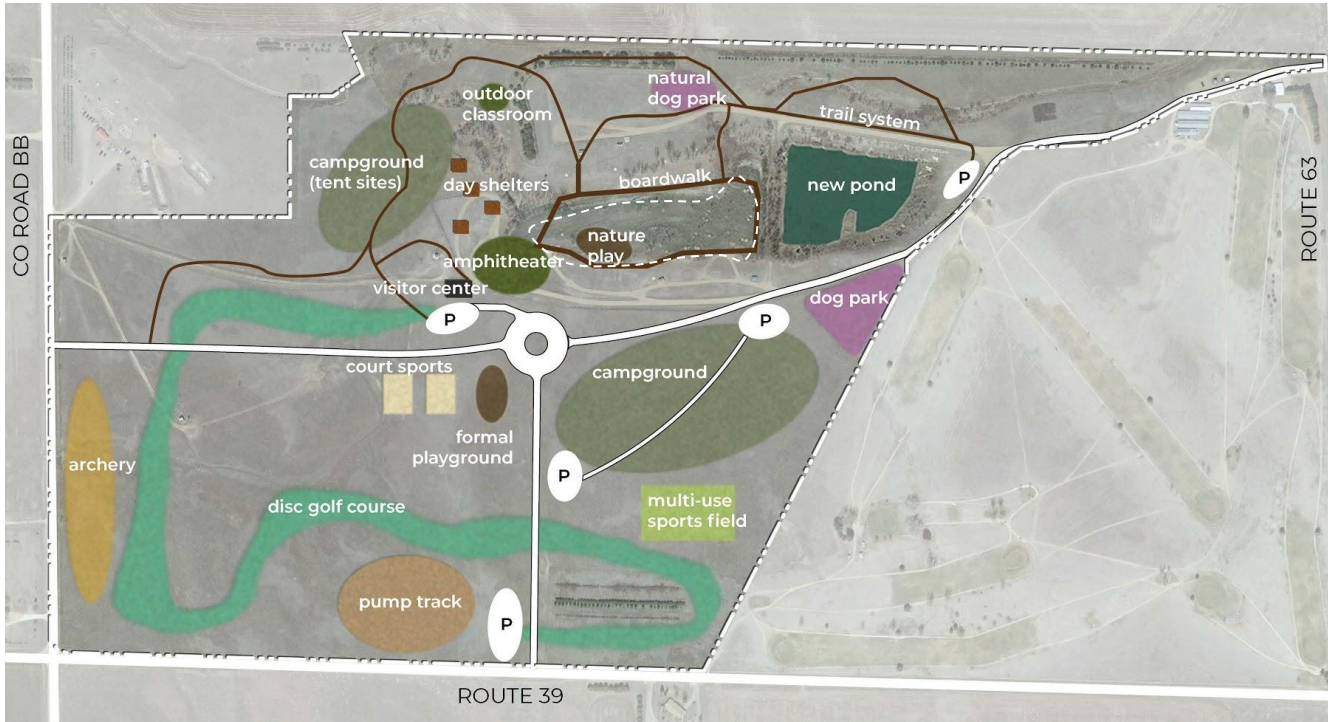
The T- precedents

DAY SHELTERS



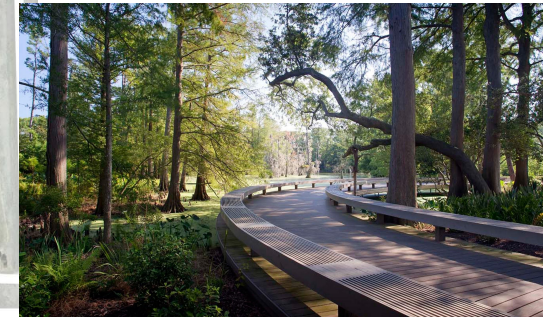
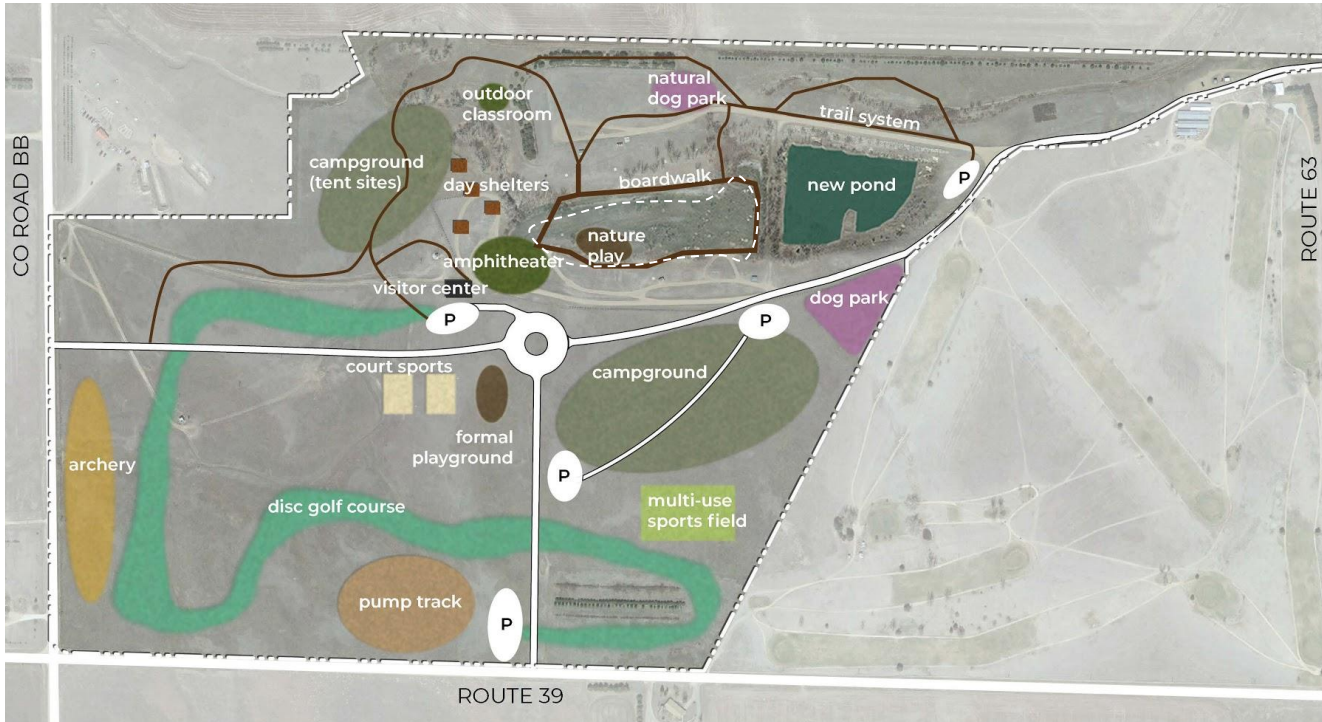
The T- precedents

DISC GOLF



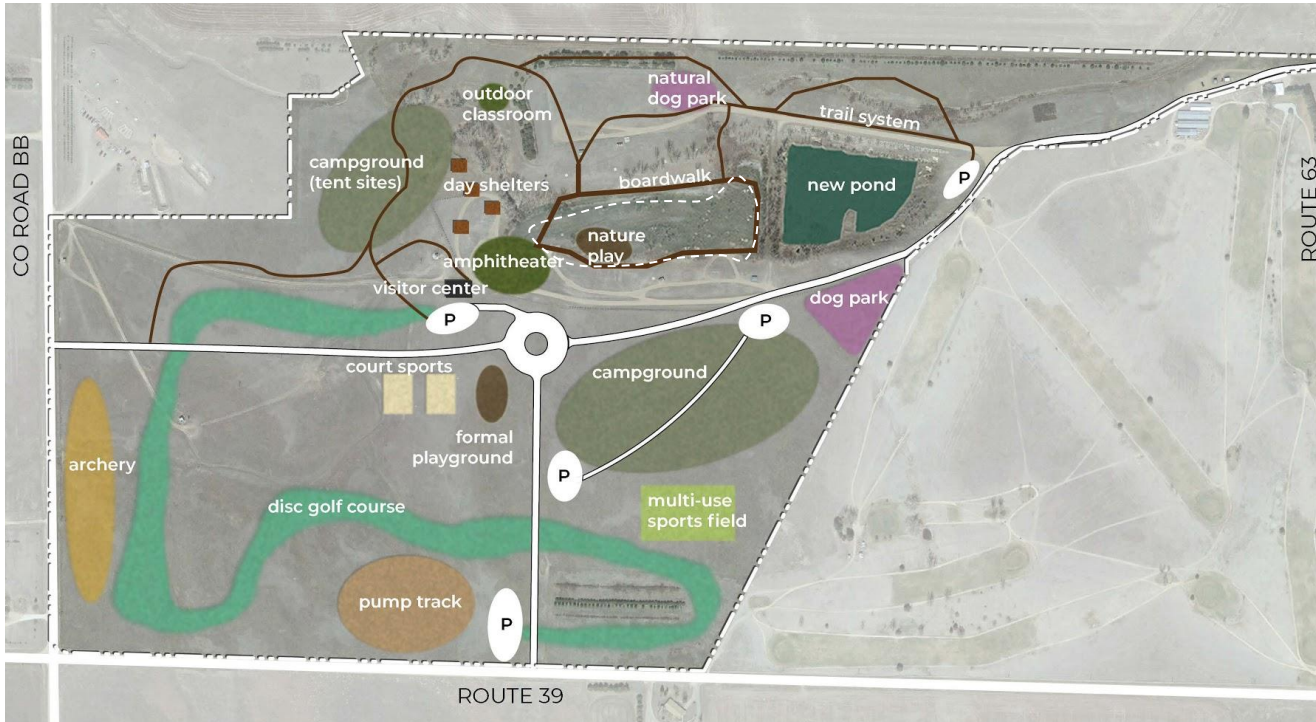
The T- precedents

BOARDWALK SYSTEM

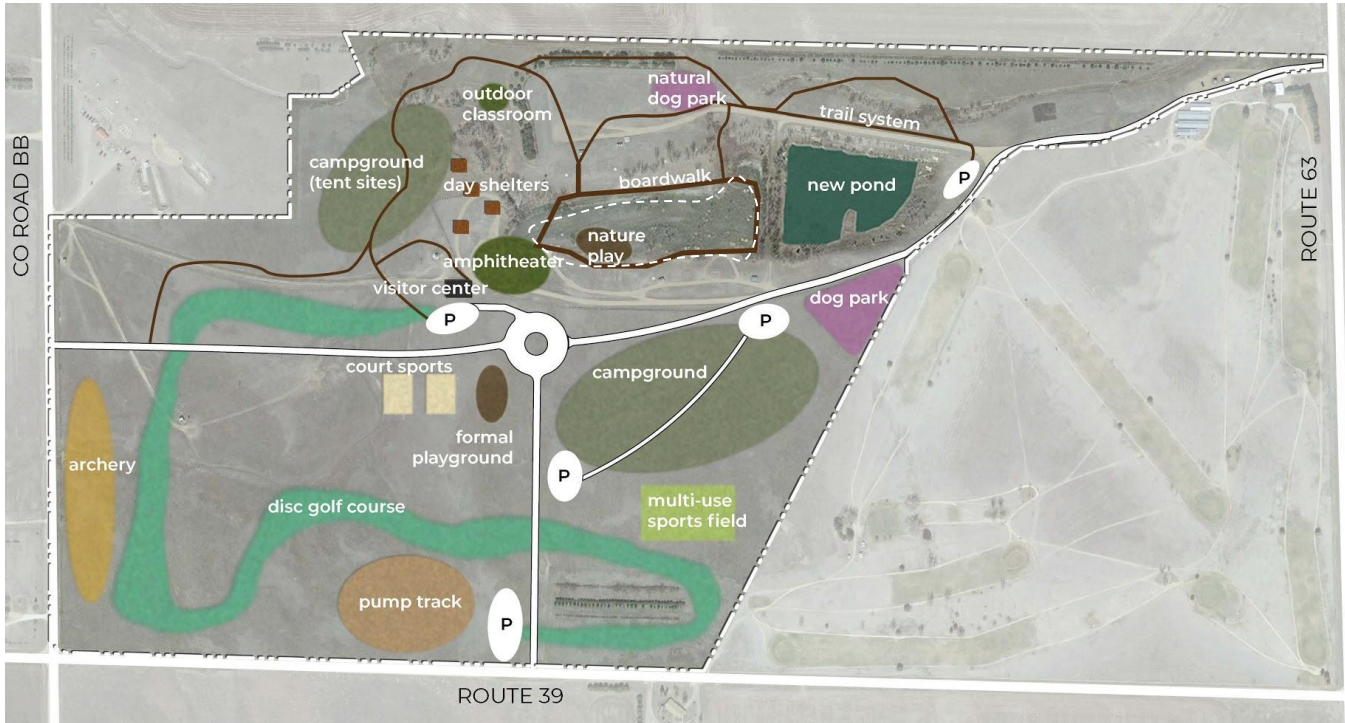


The T- precedents

DOG PARKS



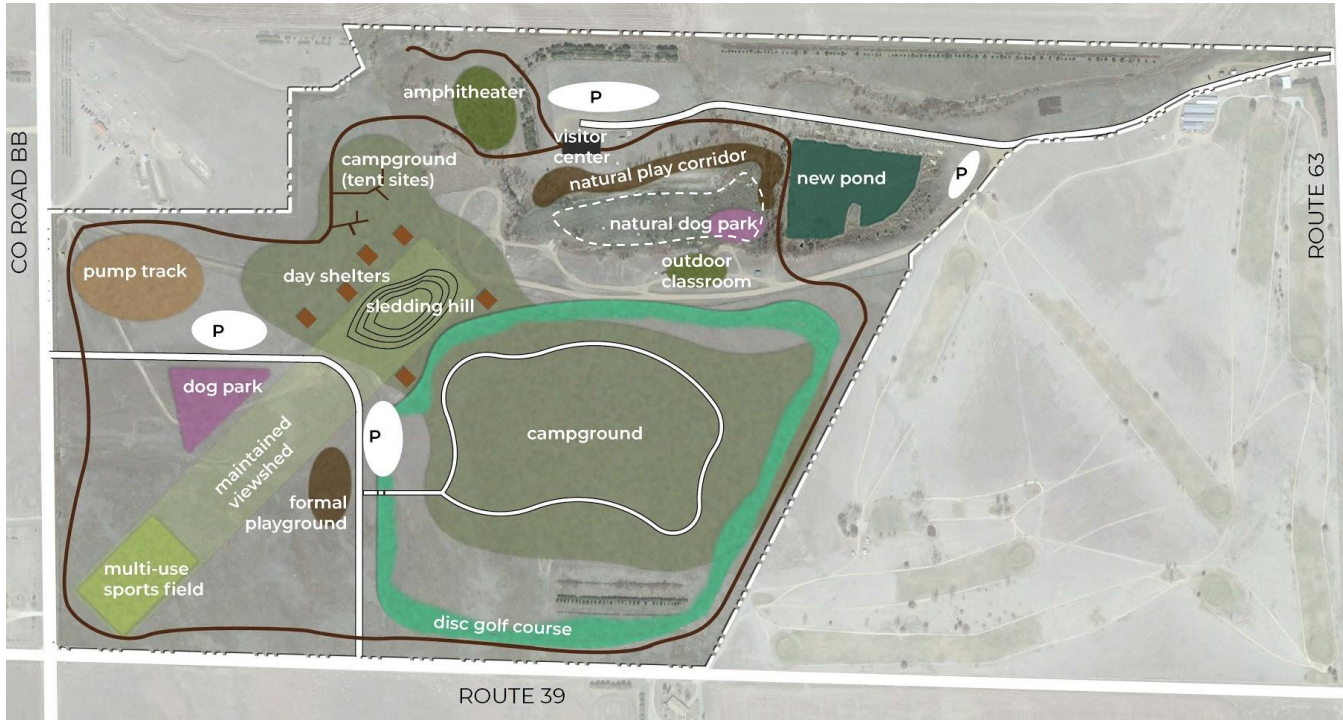
The T- precedents



PUBLIC ART



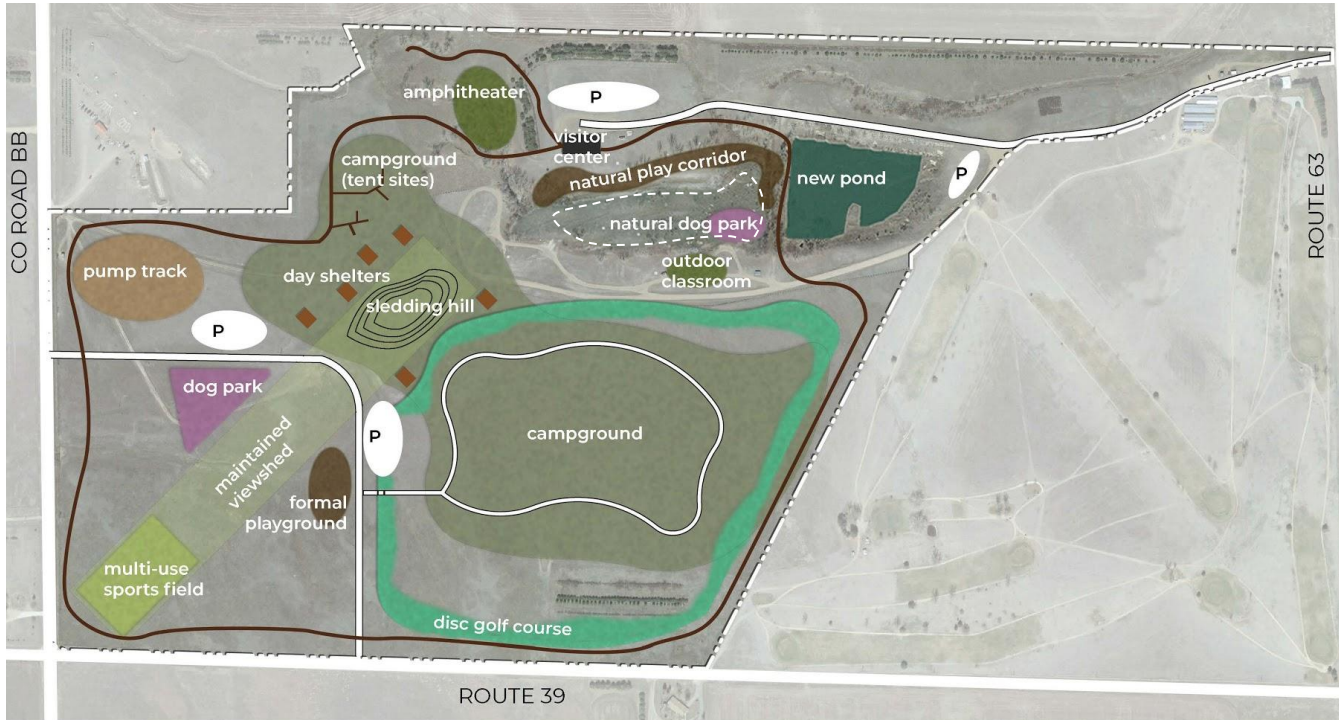
The Two Way- overview



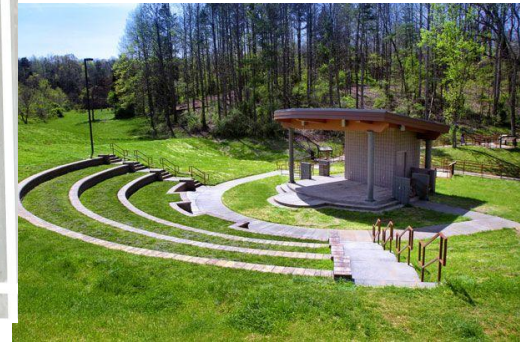
KEY FEATURES:

- Two main circulation roads: one on the northern end of the site, one connecting Route 39 and CO Road BB
- Loop trail system
- Centrally located sledding hill
- Viewshed corridor maintained from southwest of site

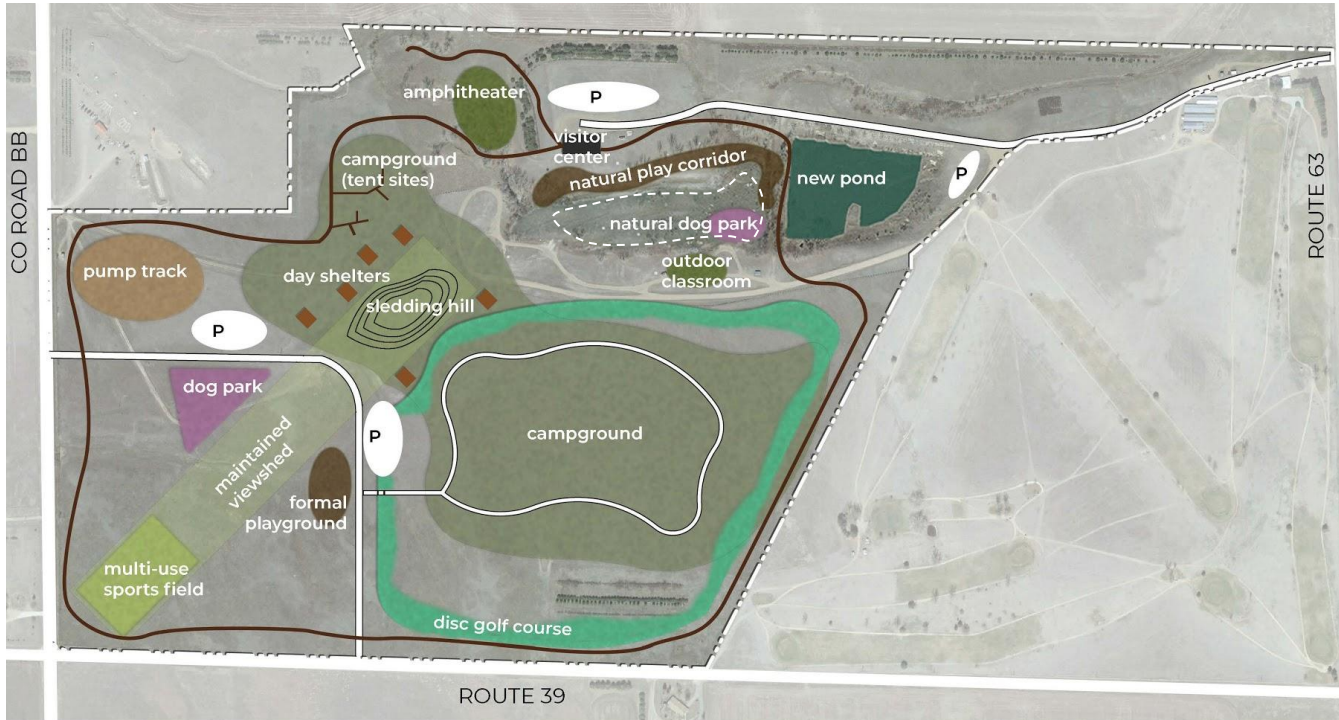
The Two Way- precedents



NATURAL AMPHITHEATER



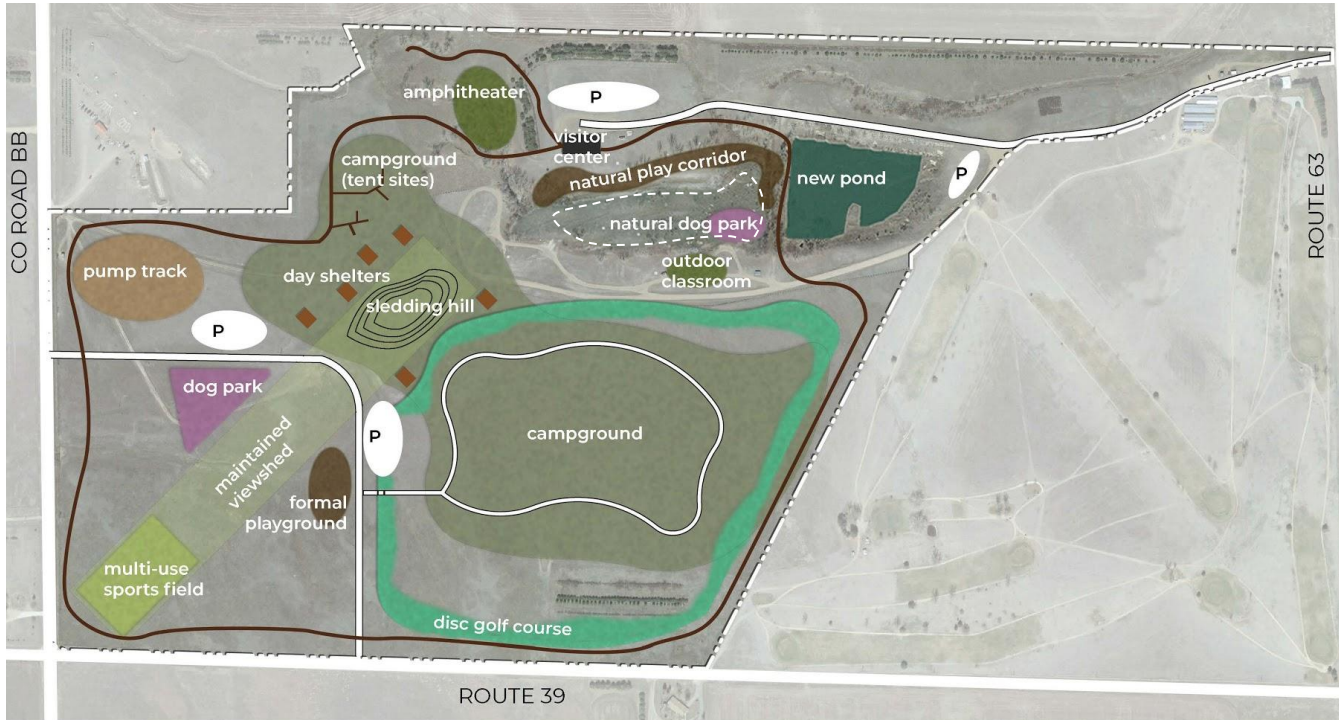
The Two Way- precedents



NATURE PLAY CORRIDOR



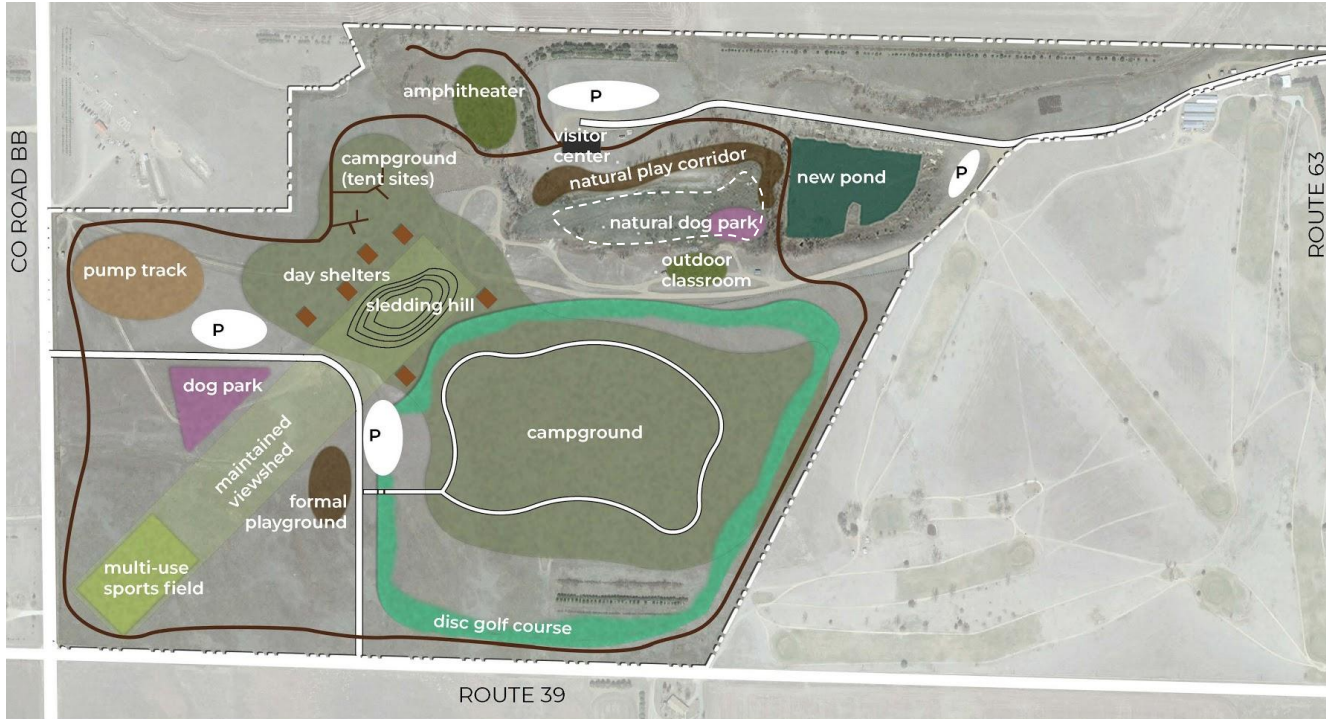
The Two Way- precedents



OUTDOOR CLASSROOM



The Two Way- precedents



SLEDDING HILL



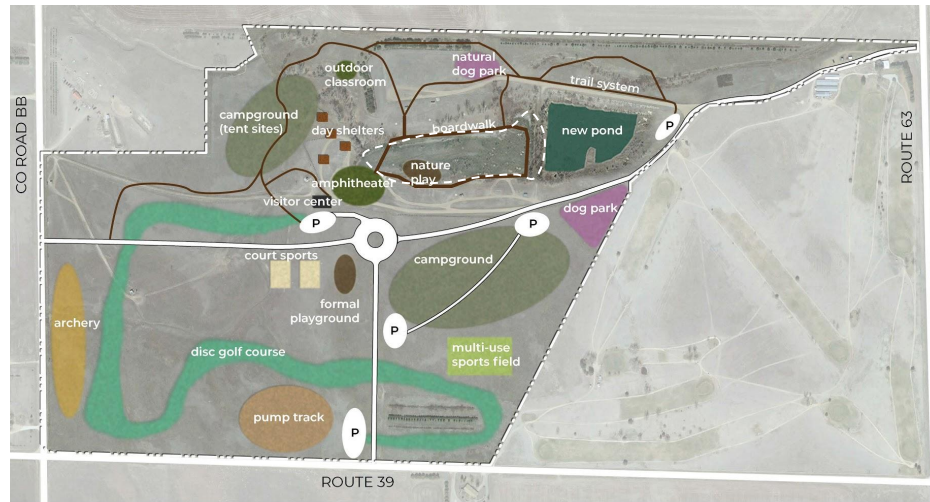
The Two Way- precedents



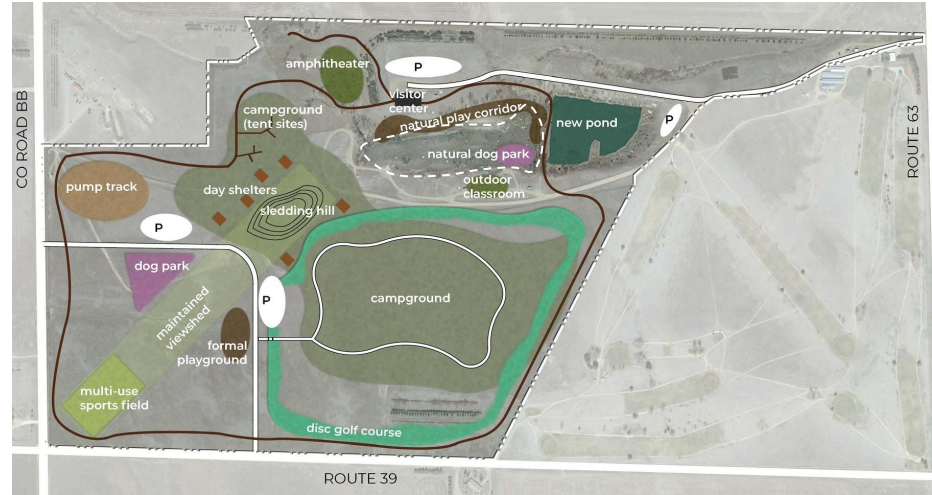
GREEN CORRIDOR



Final Design Concepts



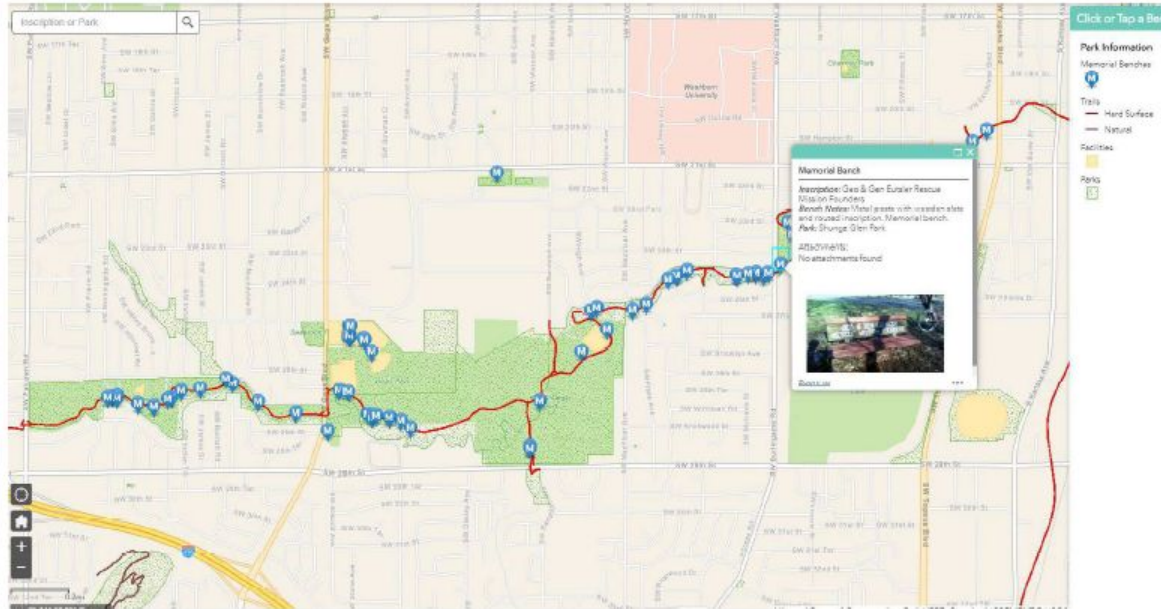
THE T



THE TWO-WAY

Donor Possibilities

MEMORIAL BENCH PROGRAM



- Allow people to either
 - Select their type of bench
 - Create a standardized bench (and price point)
- Limit text for engravings
- Keep a directory of donation benches



1816 CITY CORPORATION - 2000 FROM 1860

GOVERNMENT

SERVICES

COMMUNITY

tree.

Species List

- Red maple (*Acer rubrum*)
- Silver maple (*A. saccharinum*)
- Japanese maple (*A. palmatum*)
- Cherry-bark oak (*Q. pagoda*) [Note: Bartlett City Tree]
- Southern red oak (*Q. falcata*)
- Nuttall oak (*Q. nuttalli*)
- Pin oak (*Q. palustris*)
- Northern red oak (*Q. rubra*)
- Eastern white oak (*Q. alba*)
- Willow oak (*Q. phellos*)
- Water oak (*Q. nigra*)
- Sawtooth oak (*Q. acutissima*)
- Baldcypress (*Taxodium distichum*)
- Dawn redwood (*Metasequoia glyptostroboides*)
- Blackgum (*Nyssa sylvatica*)
- Ginkgo (*Ginkgo biloba*)
- Yellow-poplar (*Liriodendron tulipifera*) [Note: Tennessee State Tree]
- Green ash (*Fraxinus pennsylvanica*)
- White ash (*Fraxinus americana*)
- Basswood/Linden (*Tilia* spp.)
- Southern magnolia (*Magnolia grandiflora*)
- Loblolly pine (*Pinus taeda*)
- Eastern white pine (*Pinus strobus*)
- Deodar cedar (*Cedrus deodara*)
- Blue atlas cedar (*Cedrus atlantica* 'Glaucus')
- Yoshino cherry (*Prunus yodensis*)
- Kwanzan cherry (*Prunus serrulata* 'Kwanzan')
- Flowering dogwood (*Cornus florida*)
- Kousa dogwood (*Cornus kousa*)
- Star magnolia (*Magnolia stellata*)
- Saucer magnolia (*Magnolia x soulangeana*)
- Hawthorn Hybrids (*Crataegus* spp.)
- Redbud (*Cercis canadensis*)
- Golden raintree (*Koelreuteria paniculata*)
- Serviceberry (*Amelanchier* spp.)
- Chastetree (*Vitex agnus-castus*)

- Give one option for pricing
- Provide species list to choose from
- Keep a directory of donated tree locations

[illegible]

Donor Possibilities

Beyond Benches and Trees

The following list includes examples of some gifts that Parks staff would welcome:

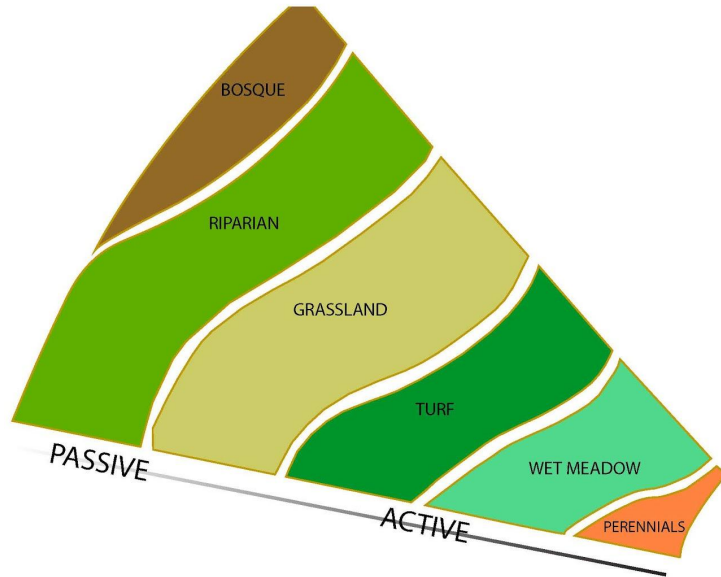
- Asphalt Pathways – \$40 per linear foot
- Summer Camp Scholarships – \$210 per child
- Native Wildflower & Grasses Planting – \$500-\$1,500
- Historical/Interpretive/Wayfinding Signs – \$3,000-\$6,000 each
- Drinking Fountains (for people and dogs) – \$4,000
- Basketball/Tennis Court Refurbishment – \$50,000 per court
- Boardwalks – \$50,000-\$100,000
- Picnic Shelter (Particular Needs at: Furstenberg and Buhr Parks) – \$65,000-\$100,000
- Skatepark Donations through the [Ann Arbor Community Foundation](#)
- Playground Equipment for Neighborhood Parks – \$5,000-\$50,000
- Picnic Tables – \$3,000-\$6,000
- Flower Planting (Includes Maintenance by Donor) – \$50-\$150

OTHER OPTIONS

- Memorial pavers
- Annual / perennial flowers

Ann Arbor, MI Parks and Recreation suggested donations

Vegetative Zones



BOSQUE- Forest-like groupings of trees with species tolerant to local climate such as juniper, black chokecherry, and boxelder.

RIPARIAN- Plantings adjacent to streams such as cottonwoods and willows.

GRASSLAND- Sagebrush prairie plantings which enhance existing landscape and preserve native species.

TURF- Manicured grass plantings for use on activity fields and event spaces.

WET MEADOW- Short-grass prairie with low maintenance and durable to withstand heavy impact.

PERENNIALS- Drought-tolerant flowers and shrubs which provide color year after year such as upright prairie coneflower, scarlet globemallow, and goldenrod.

ACTIVE RECREATION

Vegetation Types:
Turf, Perennials



LURIE GARDEN AT
MILLENNIUM PARK



HIGH-IMPACT SPORTS TURF



USSURIAN PEAR TREE /
BORDER SHADE

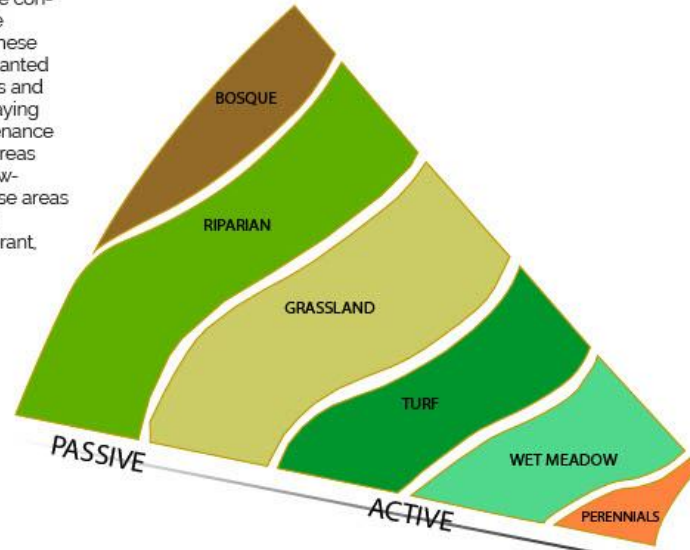
TURF: **Kentucky Bluegrass**



PERENNIALS: **Prairie Coneflower**,
Bee Balm, Purple Prairie Clover,
Hairy Golden Aster, Narrow-Leaved Penstemon,
Large-Flowered Beardtongue



Active recreation areas will provide contrast to the abundant native prairie vegetation throughout the park. These highly-manicured and densely-planted areas will host high-traffic activities and circulation corridors. While turf playing surfaces will require heavy maintenance and irrigation, perennial planting areas should be composed of mostly low-water native flowering plants. These areas of deep color will welcome sports enthusiasts and onlookers to a vibrant active space.



PASSIVE RECREATION

Vegetation Types:
Bosque, Grassland,
Wet Meadow

GRASSLAND: **Buffalo Grass**, Blue
Grama., Western Wheat Grass



WET MEADOW: **Arctic Rush**, Woolly
Sedge, Nebraska Sedge, Common Spike
Rush, Foxtail Barley, Arctic Rush



MOWED PASTURE CORRIDORS



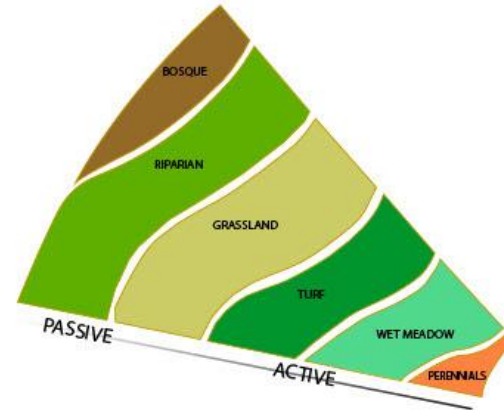
DISC GOLF PLAYED AROUND SITE



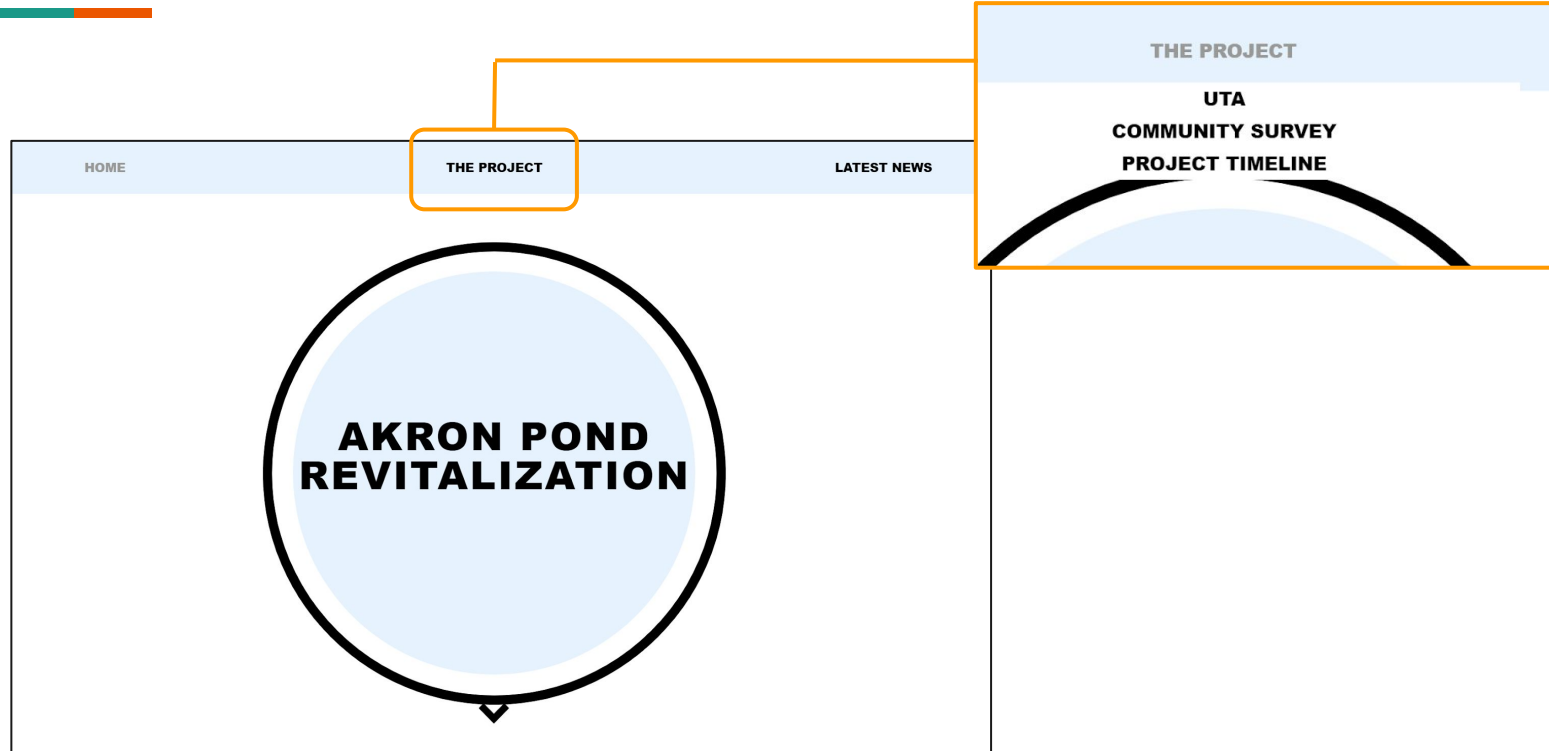
JOGGING THROUGH
PRAIRIE CORRIDORS

Passive recreation areas will act as interweaving vegetation connections. With medium-impact, low-maintenance spaces, passive recreation corridors allow for active lifestyles to be enjoyed in the unkept prairie. Drought-tolerant grasses and shrubs should be established to create adequate spaces along with additional prairie habitat.

BOSQUE: **Bebb's Willow** could be established as a prairie bosque where vegetative buffers are thought necessary.



Next Steps- Website?



Conclusion

